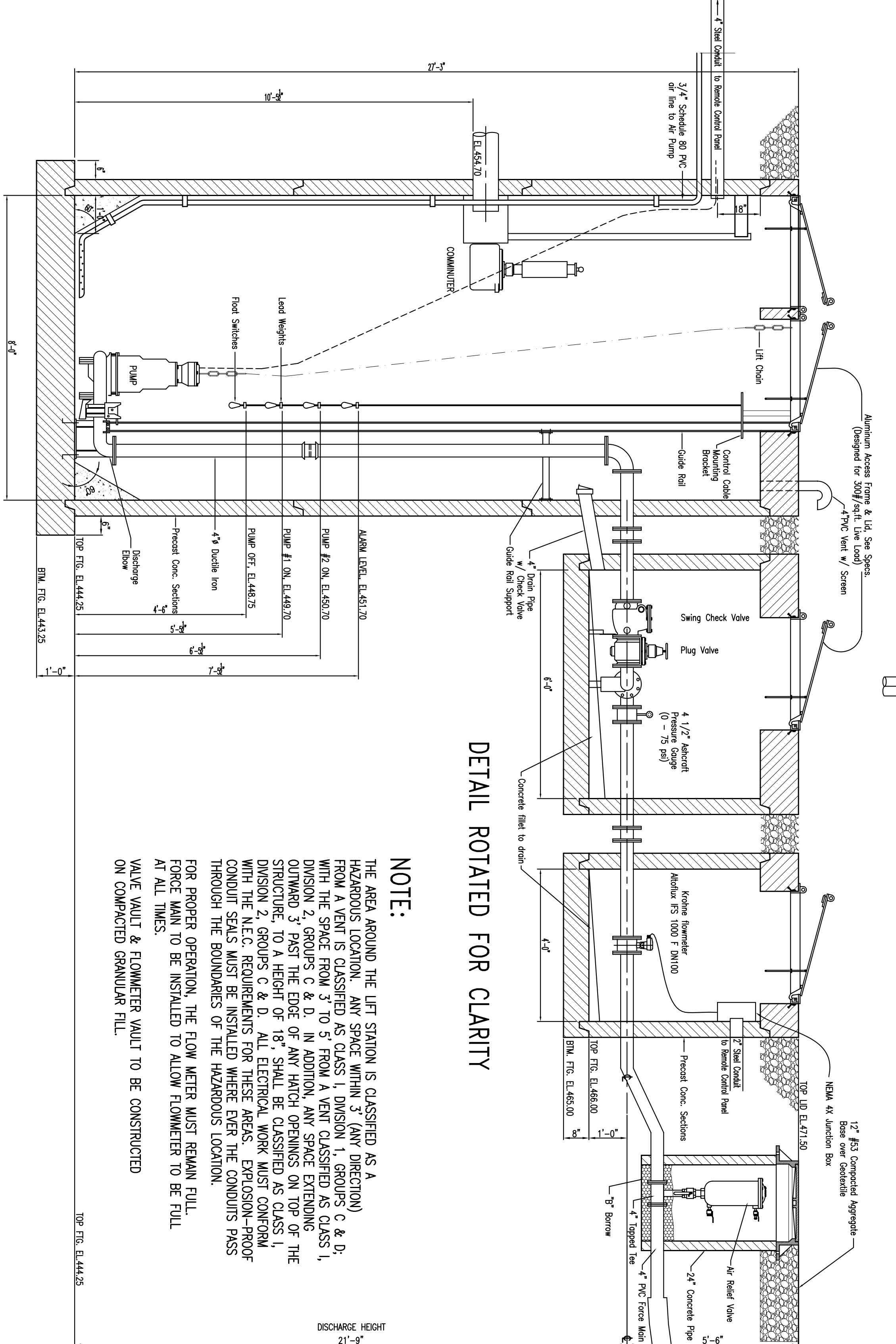


LIFT STATION PLAN

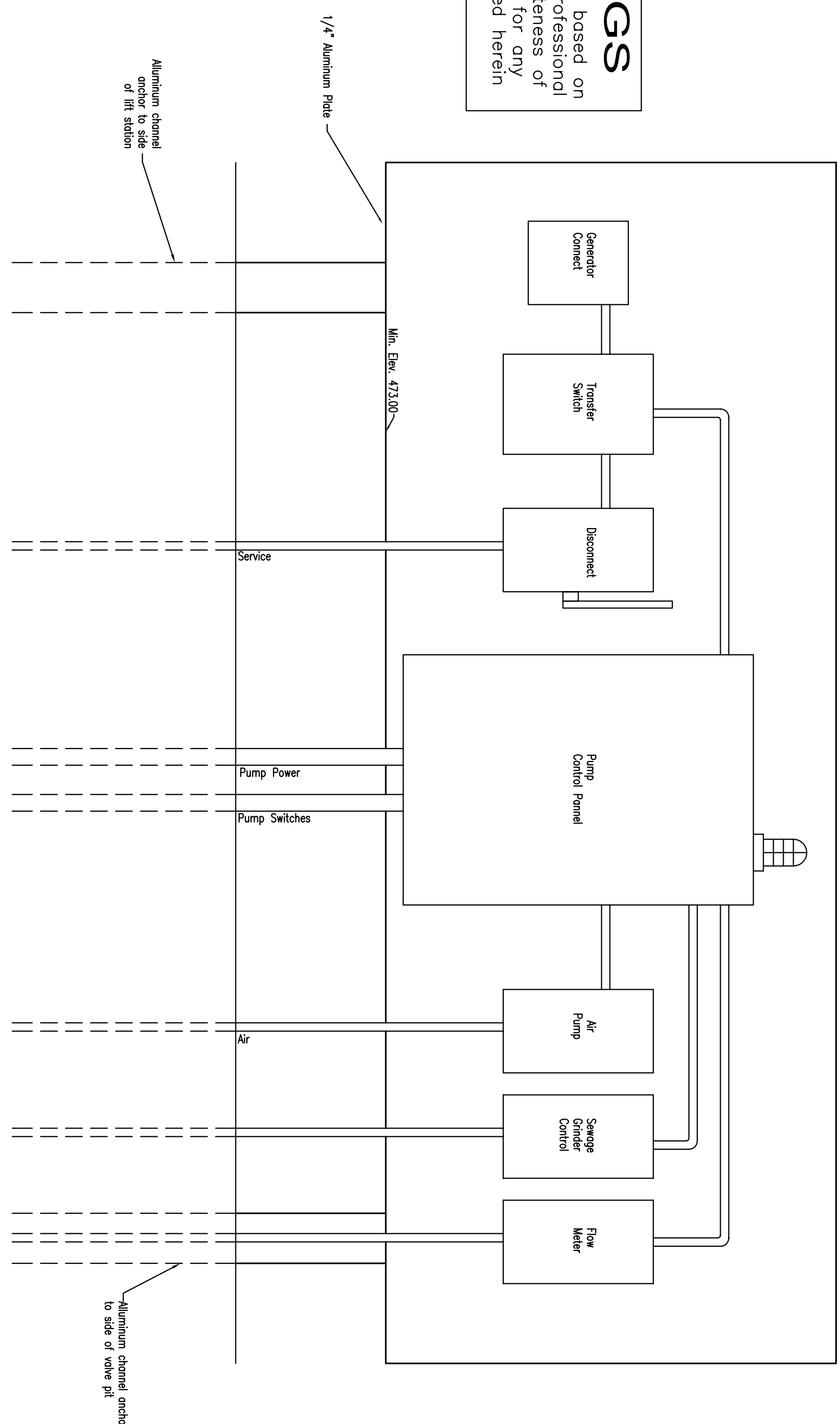
NOTE:
MANUFACTURER TO VERIFY
HATCH SIZE AND LOCATION.



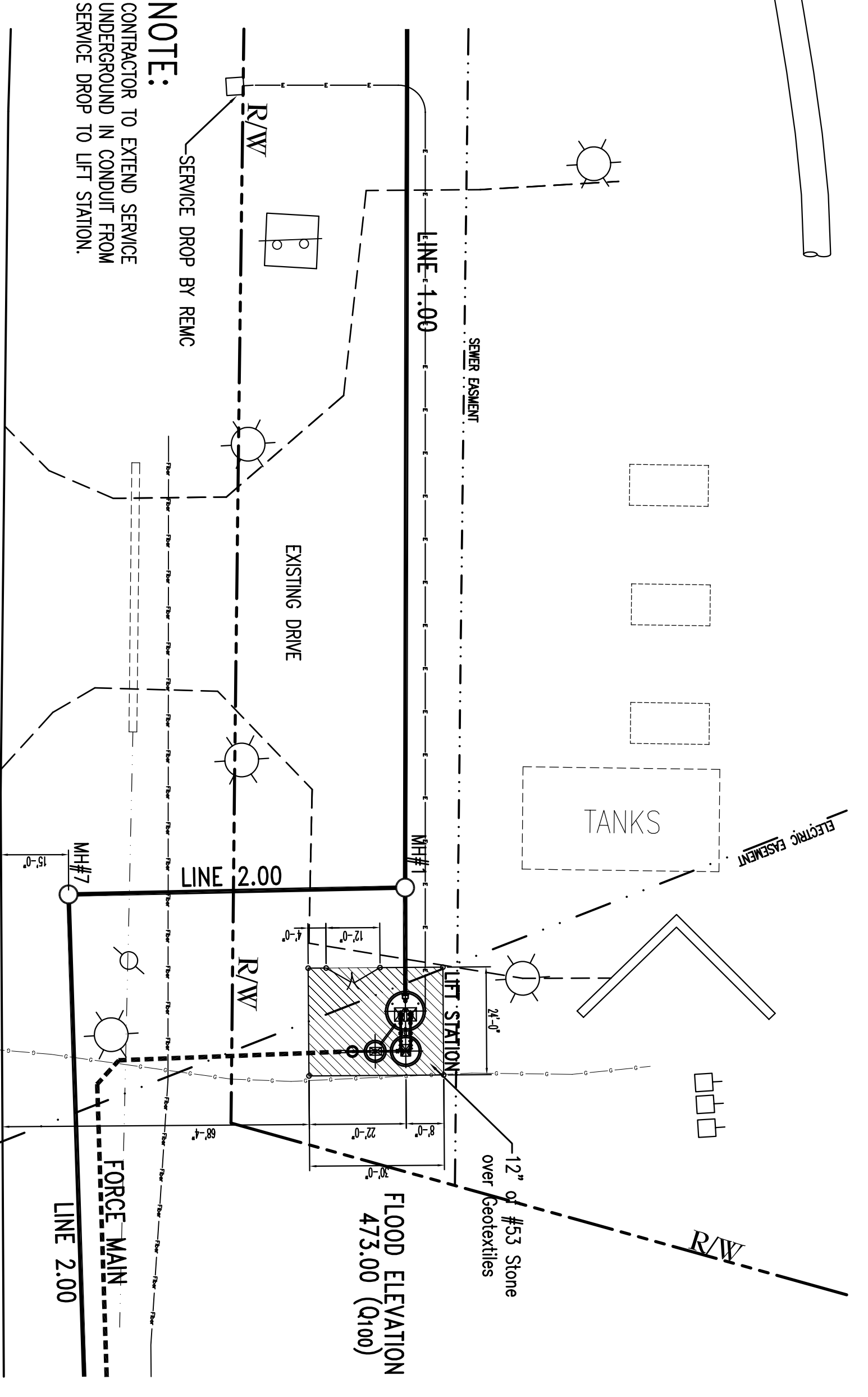
DETAIL ROTATED FOR CLARITY

NOTE:
THE AREA AROUND THE LIFT STATION IS CLASSIFIED AS A HAZARDOUS LOCATION. ANY SPACE WITHIN 3' (ANY DIRECTION) FROM A VENT IS CLASSIFIED AS CLASS 1, DIVISION 1, GROUPS C & D; WITH THE SPACE FROM 3' TO 5' FROM A VENT CLASSIFIED AS CLASS 1, DIVISION 2, GROUPS C & D. IN ADDITION, ANY SPACE EXTENDING OUTWARD 3' PAST THE EDGE OF ANY HATCH OPENINGS ON TOP OF THE STRUCTURE, TO A HEIGHT OF 18", SHALL BE CLASSIFIED AS CLASS 1, DIVISION 2, GROUPS C & D. ALL ELECTRICAL WORK MUST CONFORM WITH THE N.E.C. REQUIREMENTS FOR THESE AREAS. EXPLOSION-PROOF CONDUIT SEALS MUST BE INSTALLED WHEREEVER THE CONDUITS PASS THROUGH THE BOUNDARIES OF THE HAZARDOUS LOCATION. FOR PROPER OPERATION, THE FLOW METER MUST REMAIN FULL. FORCE MAIN TO BE INSTALLED TO ALLOW FLOWMETER TO BE FULL AT ALL TIMES. VALVE VAULT & FLOWMETER VAULT TO BE CONSTRUCTED ON COMPACTED GRANULAR FILL.

RECORD DRAWINGS
These Record documents have been prepared based on information provided by others. The Design Professional has not verified the accuracy and/or completeness of this information and shall not be responsible for any errors or omissions which may be incorporated herein as a result.



CONTROL PANEL DETAIL



SITE PLAN - LIFT STATION

LIFT STATION DETAILS
CONTROL PANEL DETAILS

Florence Regional Sewer District
Town of Florence, Indiana

SHEET NUMBER
9

JOB NO	01-2748	DATE	4/02	SCALE	As Noted
DWN BY	brk	CHK BY	jjs		
NO		DESCRIPTION		BY	DATE
		REVISIONS			

HOWARD J. BARTH & ASSOCIATES, INC.
CONSULTING ENGINEERS

347 E. WASHINGTON STREET
GREENSBURG, INDIANA 47240
812-663-2177 FAX 812/663-7906

